



PARKINSON'S DISEASE NEWS

<http://www.viartis.net/parkinsons.disease/news.htm>

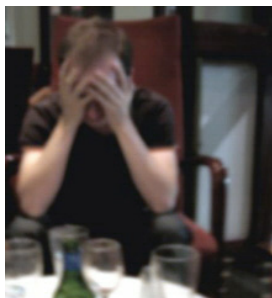
17th July 2014 - New research

SOCIAL PHOBIAS ARE COMMON IN PARKINSON'S DISEASE

Neuropsychiatric Disease and Treatment [2014] 10 : 829-834 (B.K.Gultekin, B.Ozdilek, E.E. Bestepe) Complete abstract : <http://www.ncbi.nlm.nih.gov/pubmed/24926195>

Researchers aimed to investigate the frequency of social phobias in people with Parkinson's Disease. They also explored the relationship between social phobia and the characteristics of Parkinson's Disease, and the frequency of other psychiatric disorders in Parkinson's Disease.

Social phobia (Social anxiety disorder) is a persistent fear about social situations and being around people. Much more than just shyness it can cause intense, overwhelming fear over what may just be an everyday activity like shopping or speaking on the phone. People affected by it may fear doing or saying something they think will be humiliating. For more information go to : <http://www.nhs.uk/conditions/social-anxiety/pages/social-anxiety.aspx>



Social phobia was diagnosed in 42% of people with Parkinson's Disease. Social phobia simultaneously occurred with depression in 58% of people with Parkinson's Disease. It occurred simultaneously with anxiety in 53% of people with Parkinson's Disease and with panic disorder in 17% of people with Parkinson's Disease. Social phobia was more frequent in : males, early-onset Parkinson's Disease, people with a long duration of Parkinson's Disease, the presence of postural instability, and with the use of a high L-dopa intakes.

Social phobia is frequently observed in Parkinson's Disease. Therefore, researchers suggest that the assessment of people with Parkinson's Disease patients should always include psychiatric evaluations, particularly for social phobia.

<http://www.viartis.net/parkinsons.disease/news/140717.pdf>

mail@viartis.net

©2014 Viartis